



HiPer[®] TEMP Shaker

LA1098



Introduction

The HiPer® Temp Shaker for Micro-tubes is an ideal instrument for intensive mixing of samples in regulated temperature conditions. Mixing and heating modes can be used both simultaneously and independently i.e, the device can work as shaker and as a thermostat. The main body of the Mixing Block can be used with different kinds of blocks. The HiPer® Temp Shaker is used for DNA/RNA analysis, extraction of proteins and lipids and other cell components, DNA library creation, PCR amplification, Pre-denaturation in electrophoresis, serum solidification etc.

Features:

- ◆ LCD display. It is easy to set up and use
- ◆ Accurate control and display time, temperature and speed
- ◆ Over-heating protection device ensures safety & reliability
- ◆ Low noise operation even under the speed of 1,500rpm
- ◆ Peltier design provides thermal control in a compact unit
- ◆ Easy to replace, Clean & sterilize the metal blocks

Technical Specification

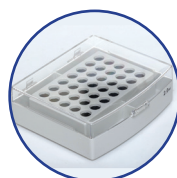
Parameter	HiPer® Temp Shaker
Mixing rate	200~1500 rpm
Orbit	2mm
Temperature setting range	0°C~100°C
Temperature control range	0°C~100°C@ Room temp. ≤20°C 4°C~100°C@ Room temp. ≤25°C 10°C~100°C@ Room temp. ≤30°C
Timing range	1min ~ 99h59min
Accuracy of the temperature	≤0.5°C
Temperature stability	@100°C: ± 0.5°C
Heating time	From 25°C TO 100°C ≤15min (The ambient temperature is 20°C~30°C)
Cooling time	≤20min(ET≤20°C:20°C~0°C) ≤20min(ET≤25°C:RT~4°C) ≤20min(ET≤30°C:RT~10°C)
Fuse	250V 3.0A Φ5×20
Dimension	300(D)×225(W)×195(H) mm
Net weight	8.5 Kg

Accessories

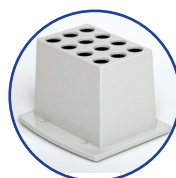
- LA1098 A 96x0.2ml tubes
 LA1098 B 35x2.0ml tubes
 LA1098 C 12x15ml Centrifuge tubes
 LA1098 D 6x50ml Centrifuge tubes



LA1098 A



LA1098 B



LA1098 C



LA1098 D

HiMedia Laboratories Pvt. Ltd.

www.himedialabs.com

- CORPORATE OFFICE -

A-516, Swastik Disha Business Park, Via Vadhani Indl Est, LBS Marg, Mumbai - 400 086, India.

Tel : 00-91-22-6147 1919 / 2500 3747 | Fax : 00-91-22-6147 1920 / 2500 5764 | Email : info@himedialabs.com

